

# SOFY

## Intelligent Testing, Increased Productivity

### Seamlessly move between Manual and Automated Testing of Mobile Apps on real devices using power of AI

- Automate testing of mobile apps and website with exploratory and scenario testing
- Enable manual testing in the cloud to gain metrics on app insights, release quality and people productivity
- See conformance of App's UX design to industry best practices and get recommendations
- Increase customer engagement of your app by ensuring compliance to desired performance thresholds
- Run at scale across OS, browser and devices and integrates with CI/CD tools
- Smart Regression lets you identify right tests to run at the right time

### What customer needs does SOFY solve?



Rapid release cycles and shrinking budgets affects Testing and Quality



Testing with Real Devices incurs high cost of devices and inhibits remote working



Manual Testing is time consuming, costly and lacks consistency



Automation requires extensive coding, high skillset and lacks resiliency to UI changes

### The SOFY Approach to Autonomous Testing

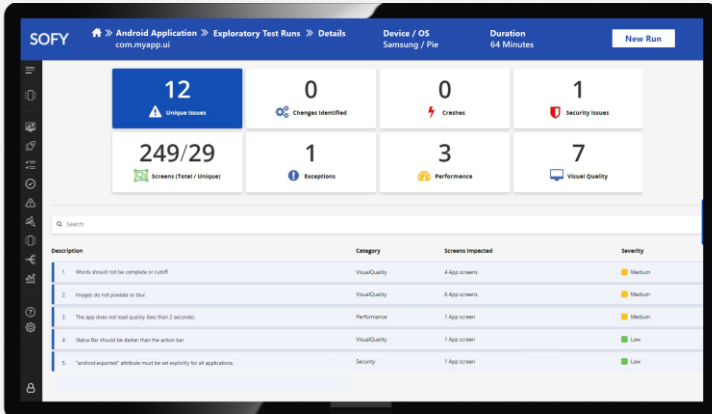
SOFY focuses on automation of client-side components including UI and functional testing, Accessibility testing as well as testing for client-side performance and security.



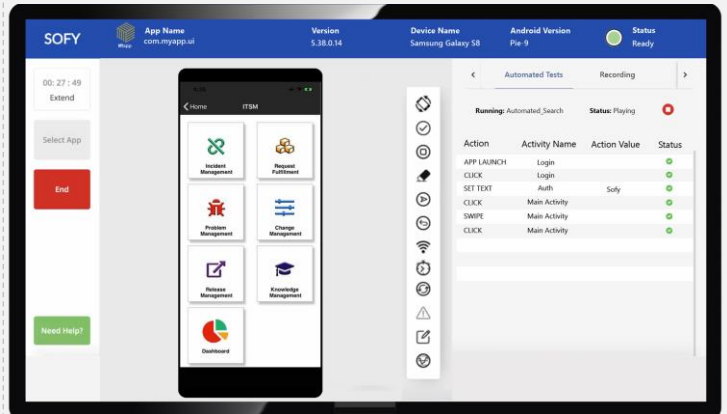
Cost of testing & length of time

Level of Automation

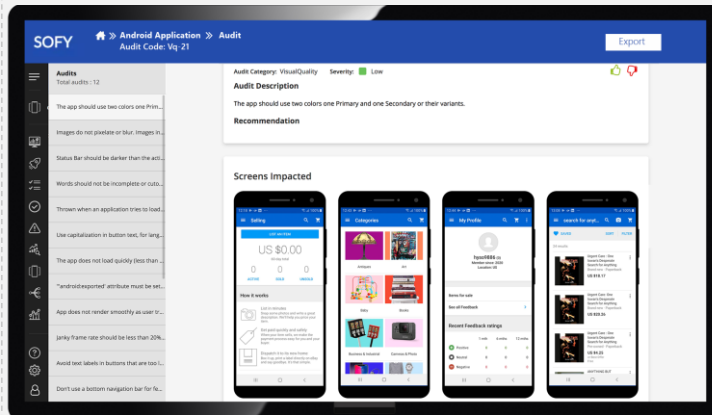
**Exploratory Testing:** Once a mobile app is uploaded, SOFY traverses the app to build an application graph and then performs exploratory tests to create a set of audits and recommendations based on SOFY's ML models.



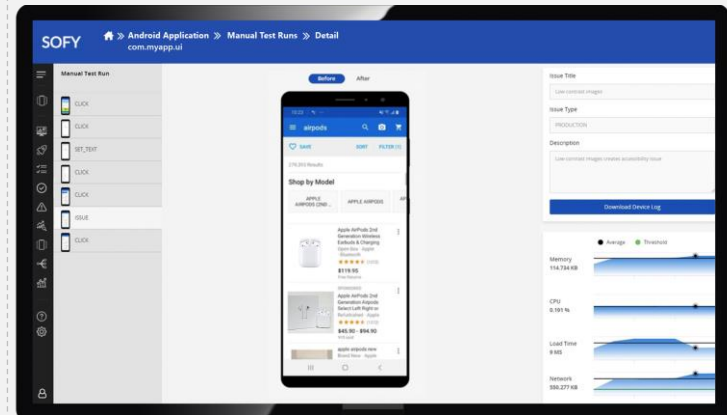
**No Code Automated Testing** enables generating a new scenario test by instantly converting a manual test or by recording on a real device. Users can define assertion rules for validation. The test can be run at scale on one or more devices via the SOFY portal or invoked automatically using a CI/CD pipeline.



**Visual Quality** tests for UX design against best practices and reports discrepancies and suggests ways to improve the design.



**Performance Testing** validates the app performance by screen across CPU, memory and network and UI load times.



**Reporting:** SOFY generates Security, Performance, Visual Quality and Crash reports while providing contextual information and recommendations for fixing the problems.

**DevOps Integrations:** SOFY integrates with popular tools like Jenkins, Jira, Azure DevOps as well as with collaboration tools like Slack and Teams.

## What differentiates SOFY?



SOFY is a single platform with a consistent user experience across Manual and Automated Testing



SOFY is a No-Code testing platform that does not require source code and is resilient to UI changes and device form factors



SOFY validates the UI against 100+ UX and Accessibility standard guidelines and provides recommendations



SOFY supports iOS and Android Mobile App testing on Real Devices

### Contact Information:

[Sales@sofy.ai](mailto:Sales@sofy.ai)

2265 116th Ave NE, Suite 210-9, Bellevue WA 98004, USA  
+1 (800) 436 4190

<https://sofy.ai>

